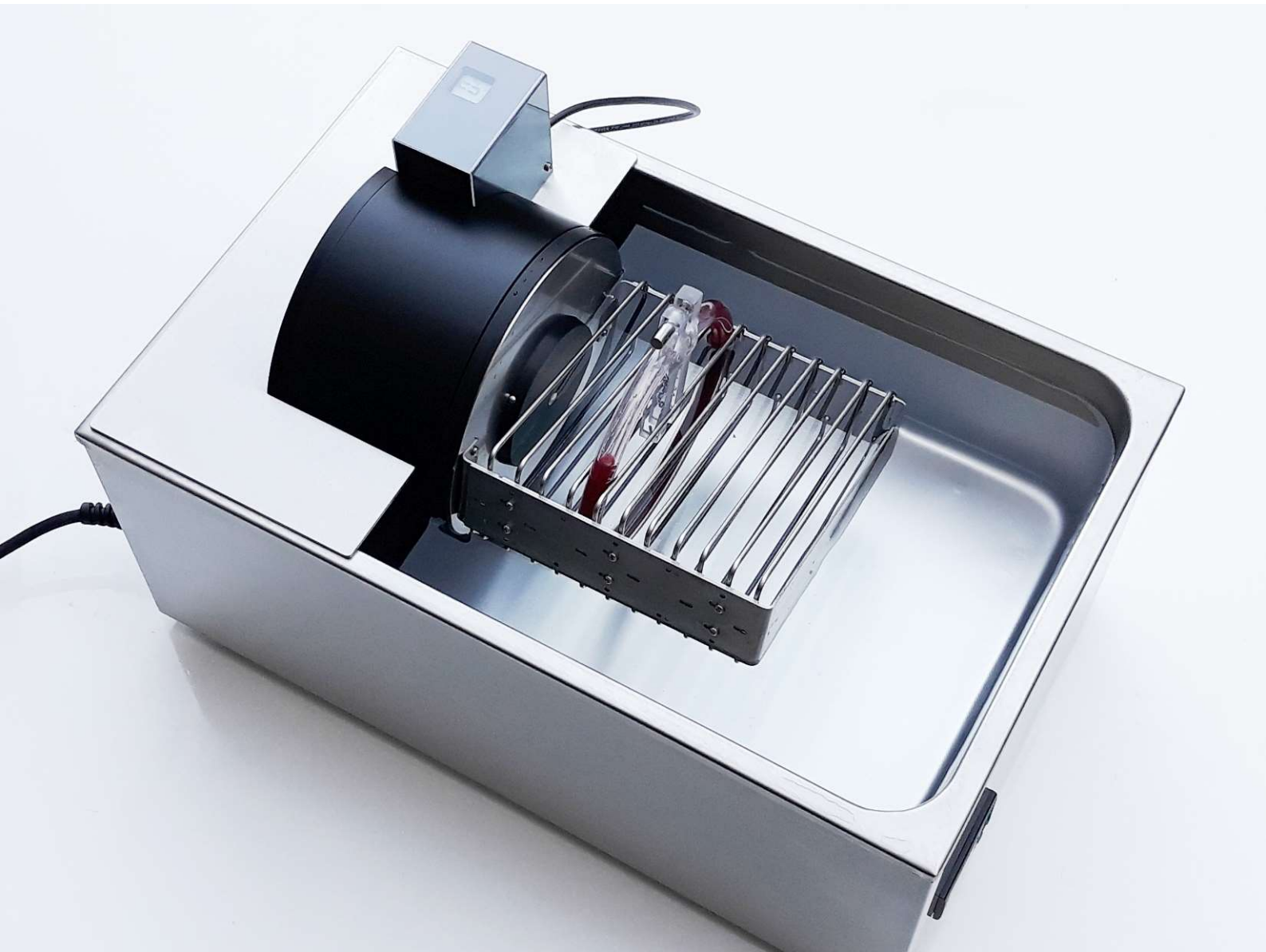
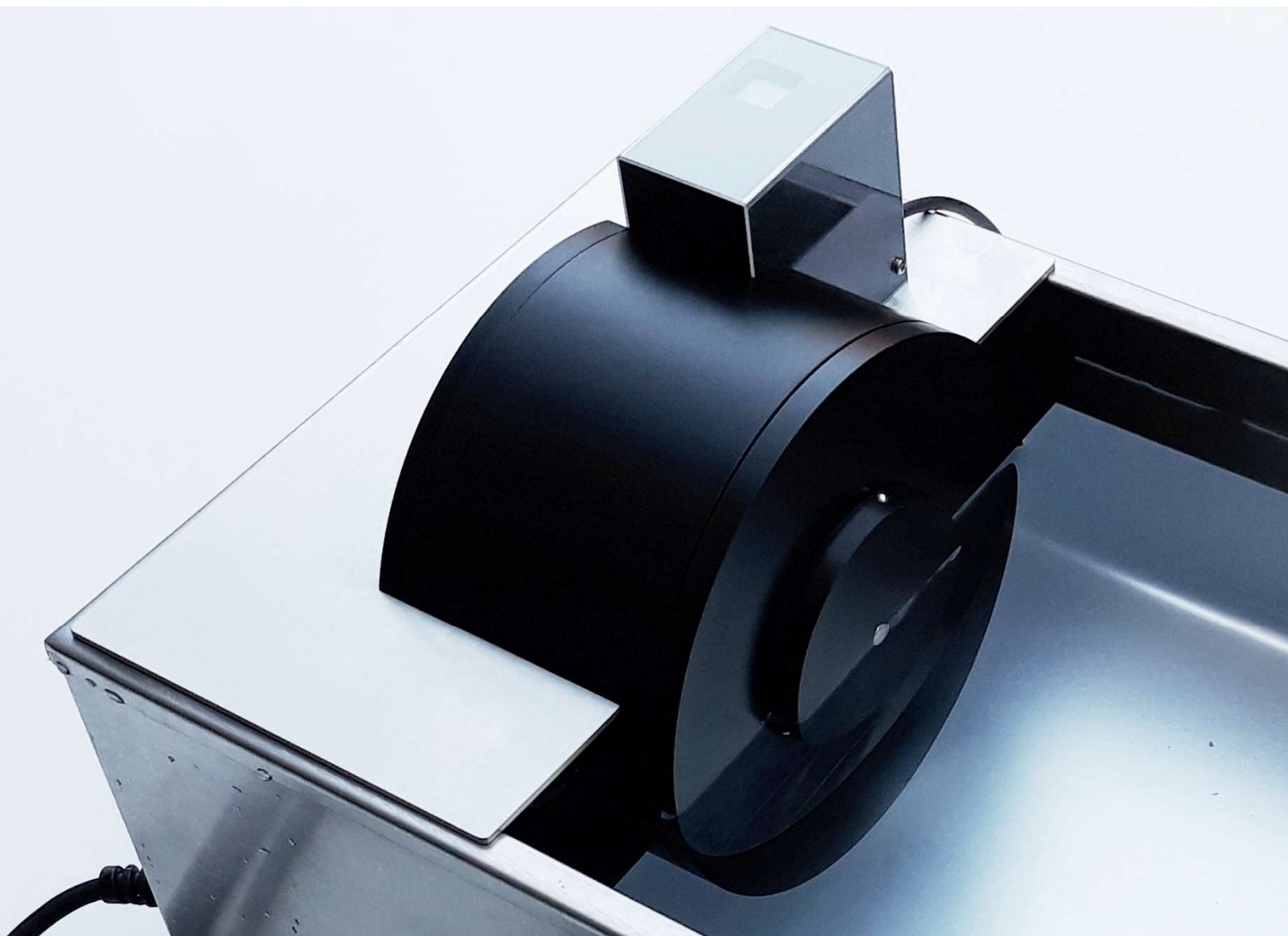


# Chandler Loop System<sup>®</sup>



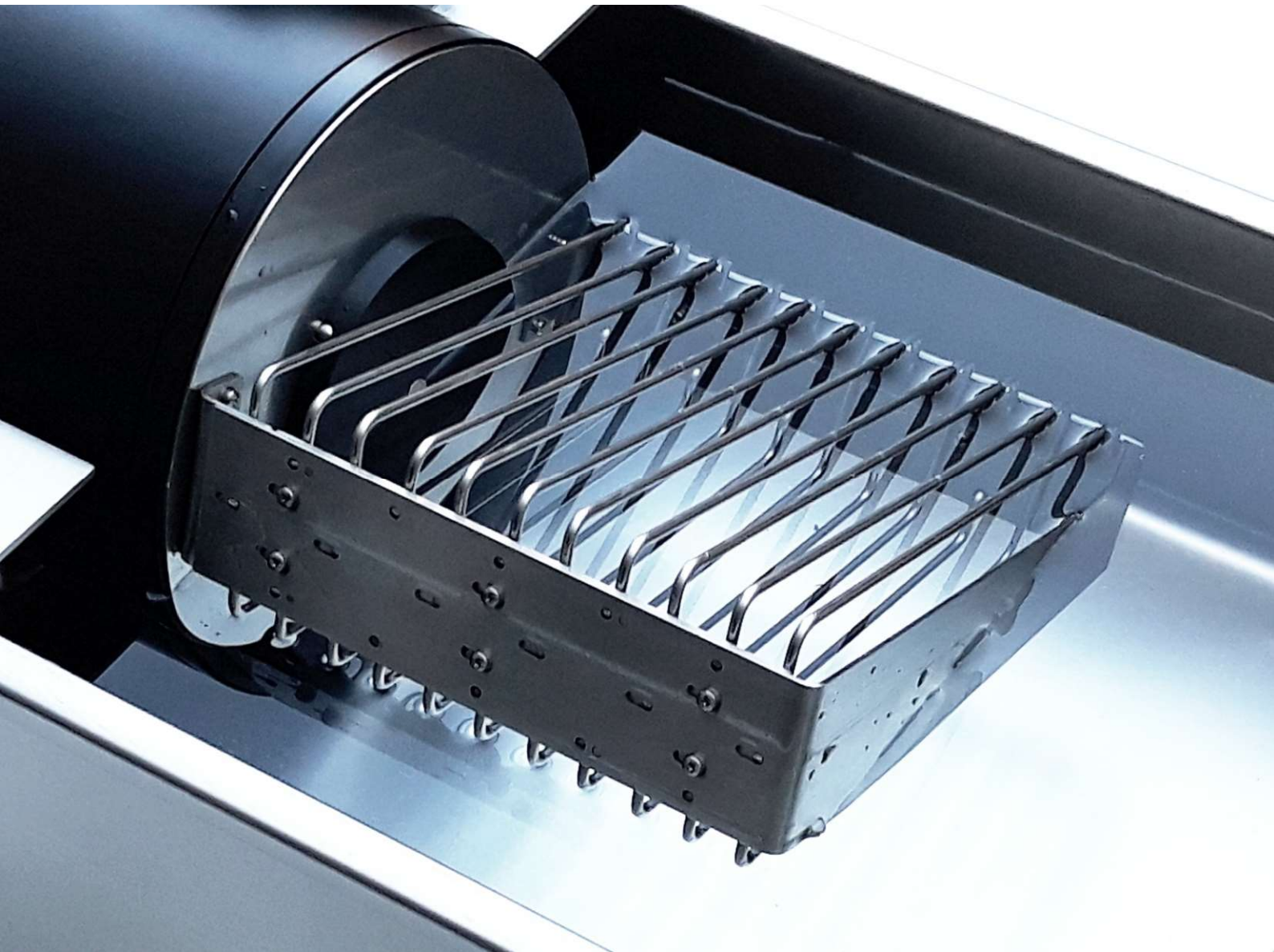
ready to use device system for loops with a maximum diameter of 200 mm  
consisting of a **rotation unit**  
a removable inox **loop cradle** for polymere tubing loops  
**tube connectors** or accurate closing lap joints  
and a **temperature controlled water basin**  
not shown on the picture above is the **circular precision cutter**

# Chandler Loop System<sup>®</sup> Rotation Unit



microprocessor controlled stepper motor  
variable rotation speed 6...40 RPM +/- 0,1 tachometer display soft start  
handsafe operation through torque control  
high resistant and laboratory conform PVC-CAW housing

## Chandler Loop System<sup>®</sup> Loop Cradle



the construction enables random access to each loop which gives the possibility of continuous processing  
for maximum flexibility, the cradle is snap on removable to the rotation unit  
variable slot width from 2,3....18,3 mm  
for loops up to 200 mm diameter  
completely made out of inox steel 1.4021



# Chandler Loop System<sup>®</sup> Temperature Controlled Water Basin



adjustable constant process temperature typ. 38,0°C / 103°F  
PID Controller. max. + 1,0 / -0,5°C typ. +/- 0,1°C  
100...230 V / 50...60 Hz AC power supply 0,5...1,2 kW  
12V DC power supply for the rotation unit  
21l water capacity dimensions 340 x 590 x 180 mm weight ca. 9 kg

# Chandler Loop System<sup>®</sup> Circular Precision Cutter



for loops up to 200 mm diameter  
laboratory conform PVC    inox steel quality 1.4430  
completely demountable and sterilisable  
for polymere tubing up to 16 mm OD / 3/8" ID  
safe operation

# Chandler Loop System<sup>®</sup> Tube Connector



accurate loop closure avoids the background activation of the blood, deriving from the sheer stress  
at the gap between the tubes, using a conventional lap joint  
blood contact only with the biopassive coated inner surface of the tube  
alcohol and mechanical resistant resistant polycarbonate PC and inox steel 1.4305  
completely demountable and sterilisable  
standard dimensions for tubing with 3/8", 1/4", 3/16" inner diameter