

Chandler Loop System

Instruction Manual for the Loop Connector System

Intended use:

The described connector system is designed for accurate, gap free closing of polymere tube rings in Chandler Loop hemocompatibility test devices.
Don't use it for anything else.

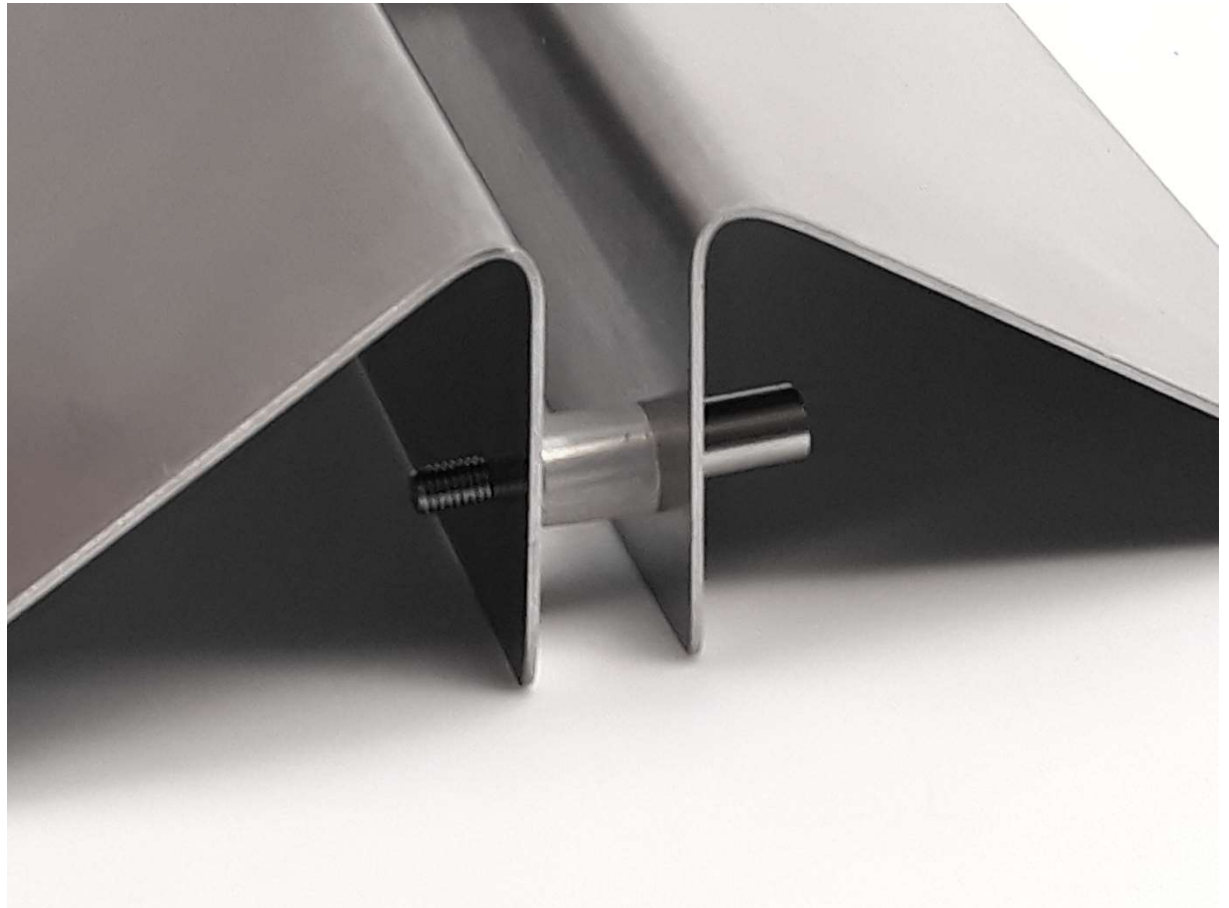
Handling of human blood is dangerous.
It is restricted to specially qualified professional staff

original english version 05 / 2020



Chandler Loop System

Setup of the loop stand

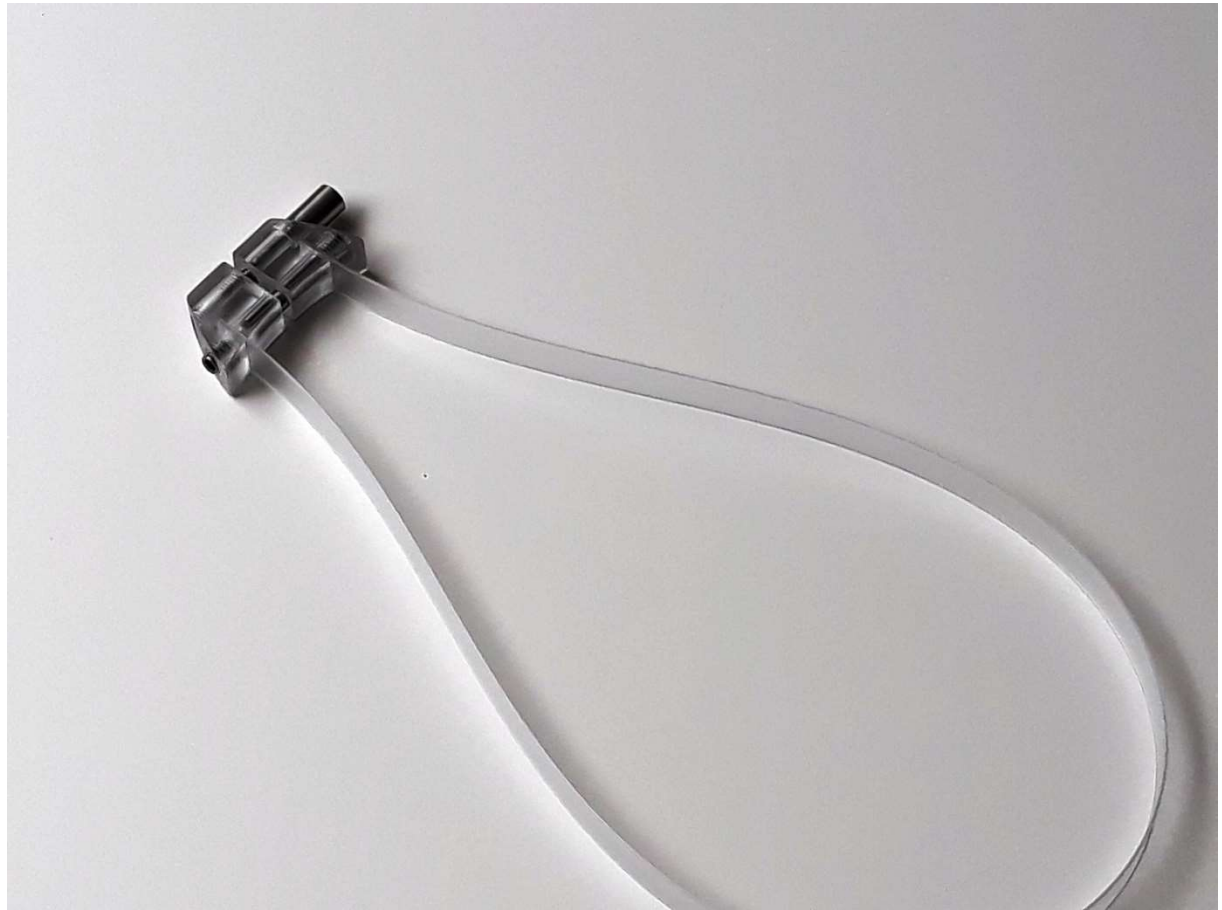


The slotwidth of the loop stand depends on the tension of the screw and the piece of tubing between. Both can be varied according to the requirements

Chandler Loop System

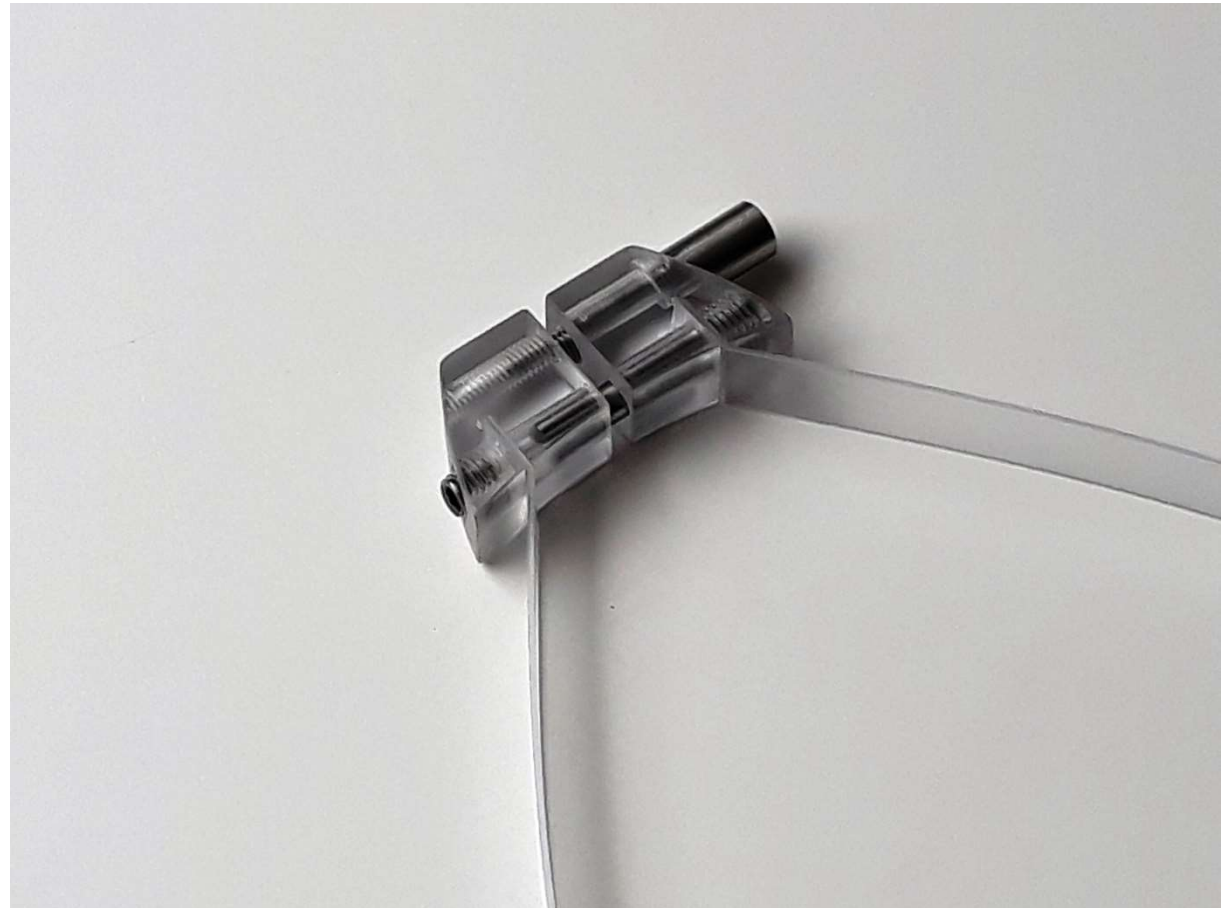
Setup of the Clamps

Cut the polycarbonate strip with a pair of scissors
ca. 10 mm longer than the tube
and insert the ends into both slots



Chandler Loop System

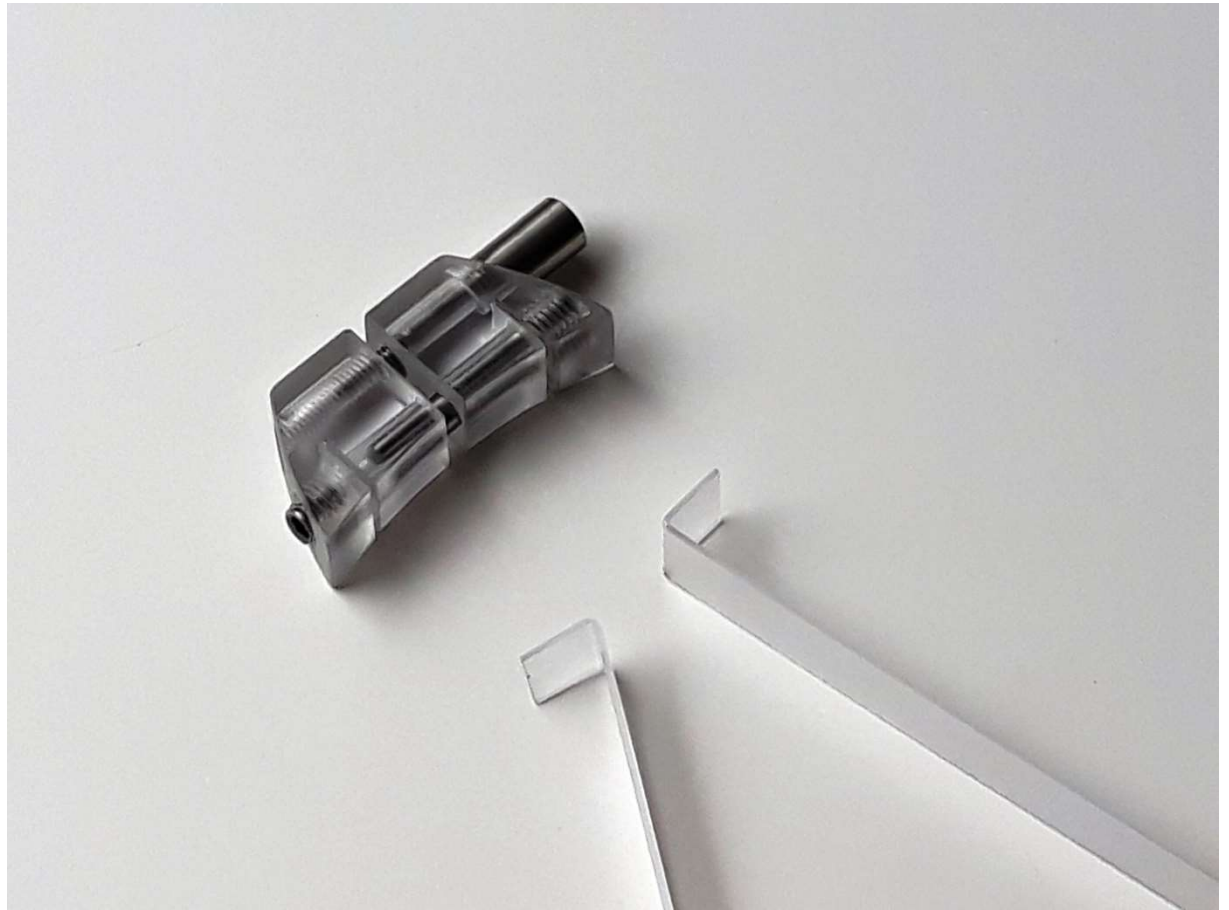
Setup of the Clamps



Kink the strip by hand

Chandler Loop System

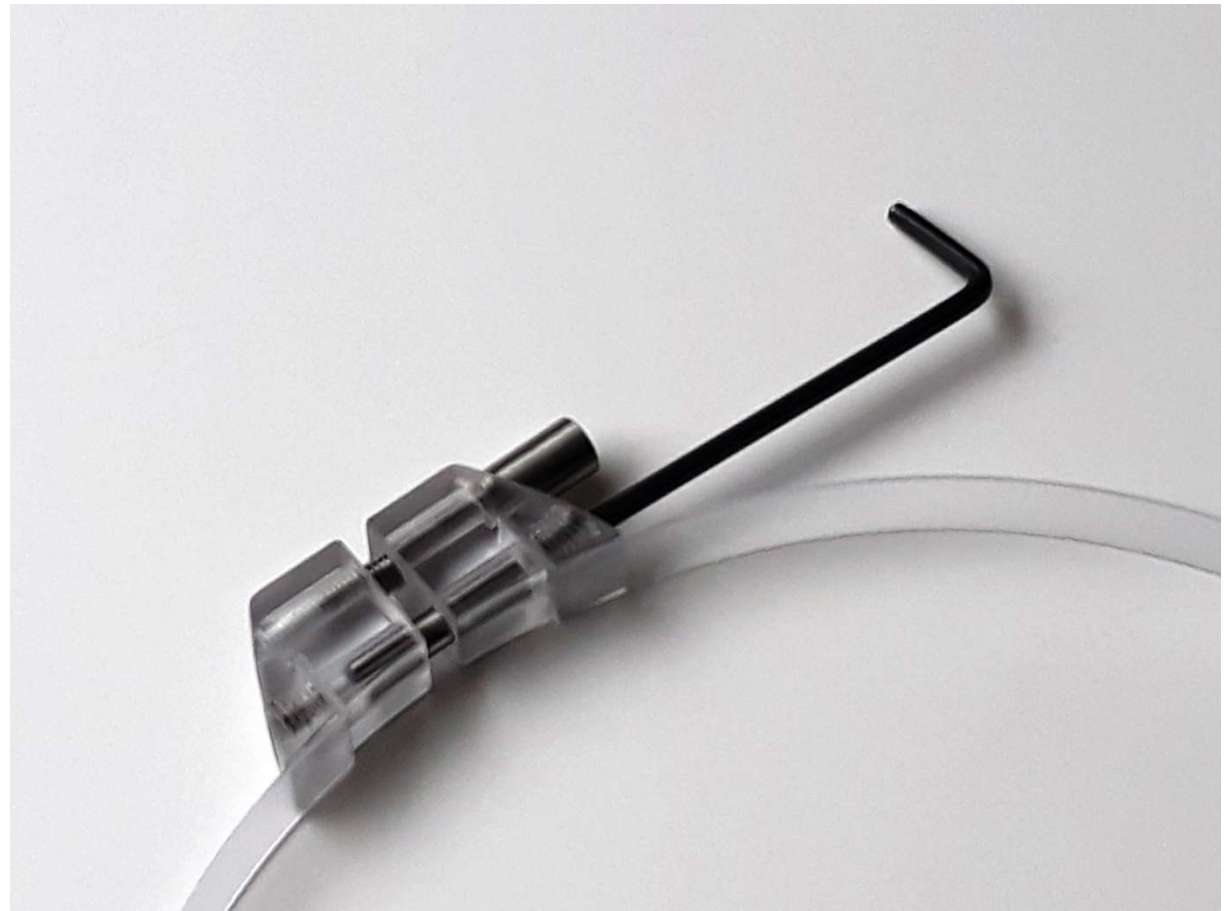
Setup of the Clamps



Intensify the kink

Chandler Loop System

Setup of the Clamps



Fix both ends with the screws.
It's enough, to tighten the screws slightly ($< 0,3 \text{ Nm}$)
The torque Allan Key helps to keep the limit

Chandler Loop System

Setup of the Clamps



Insert the tension ring afterwards the tubing
to the basis slot

Chandler Loop System

Setup of the Clamps



Close the tubing as usual with a lap joint

Chandler Loop System

Setup of the Clamps



Press the loop inside the tension ring

Chandler Loop System Setup of the Clamps



The tension can be regulated by the screw
It's a good practice to press the ends first by hand